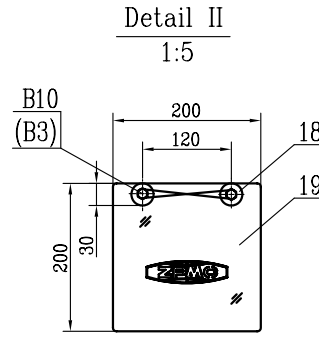
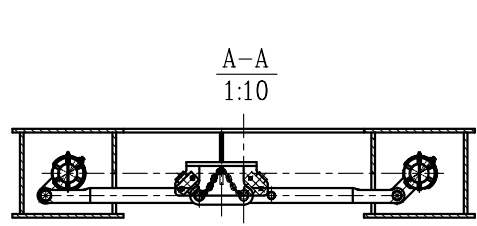
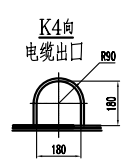
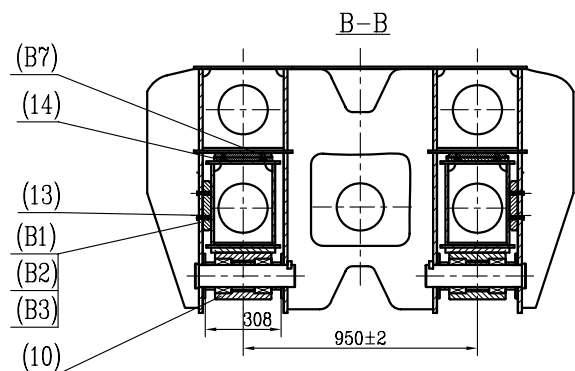
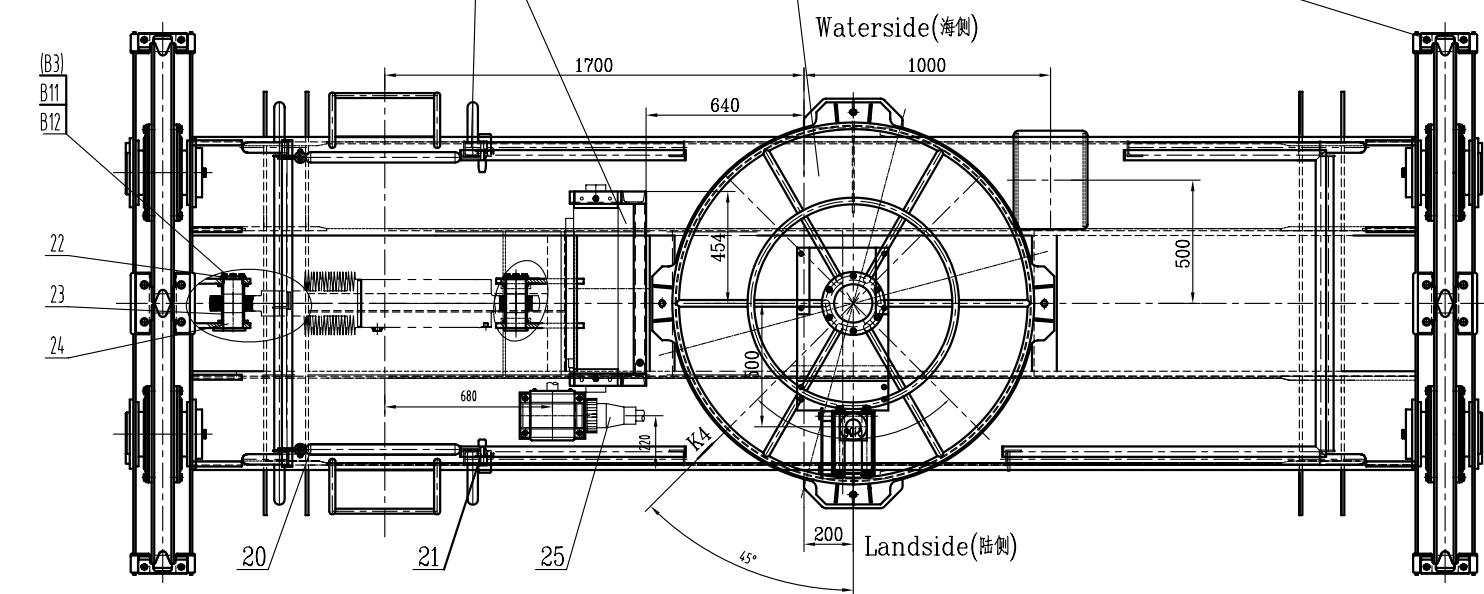
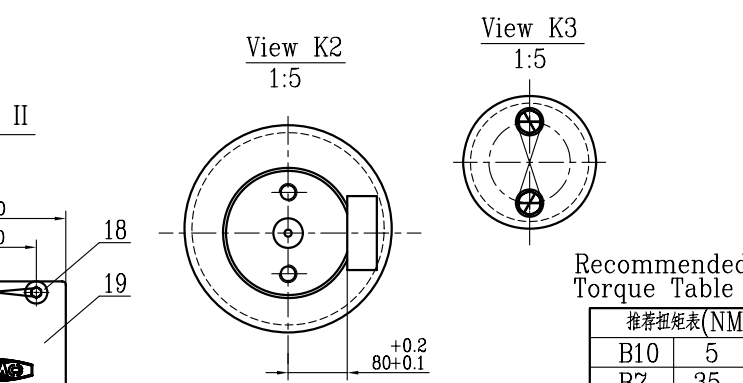
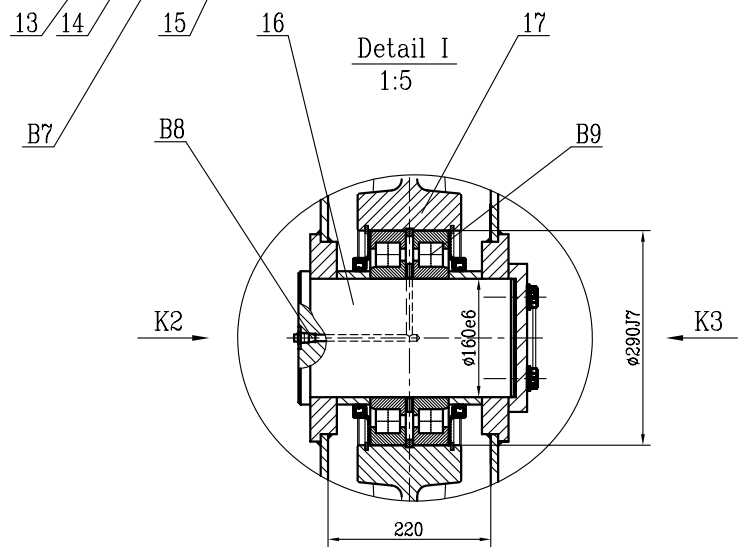


Technical requirements

- 1.Fill grease into all active parts.
- 2.After assembly, the gap between main frame and the movable frame should be not more than 1mm.
- 3.The headblock shall be painted according to ZPMC painting.
- 4.The fasteners shall be painted.
- 5.The cable box is a spare part.

技术要求

- 1.各活动关节处应定时加注润滑油,螺钉防松用乐泰胶.
- 2.移动架上下活动间隙不得大于1mm.
- 3.按公司规定的本项目油漆工艺进行油漆处理.
- 4.紧固件安装完成后,涂油漆保护,颜色同所在部位构件.
- 5.储线框为备用件,平时不安装.



Recommended Torque Table

Item	Torque (Nm)
B10	5
B7	35
B4&B5	210
B1	20

NO.	SUB-NO. or STDD	NAME & SIZE	MTL or STYLE	QTY/set	each WEIGHT	total WEIGHT	NOTE
B12	Nord Lock	销轴 M10x40	200HV	8			
B11	GB32.1-88	螺栓 M10x40	A4-70	8			不锈钢
B10	GB32.1-88	螺栓 M8x15	A4-70	8			不锈钢
B9	Timken-Wuxi(TWB)	Bearing NJ232E	无油	8	14	112	0160X290X48
B8	JIS B0203	Grease fitting PT1/4		4			不锈钢
B7	GB/T70.3-2000	螺栓 M16x30	Class 8.8	16			达克罗
B6	Nord Lock	销轴 M16	200HV	8			达克罗
B5	GB889-86	Nut M16	Class8	8			达克罗
B4	GB5782-86	螺栓 M16x55	Class 8.8	8			达克罗
B3		不锈钢丝 12		3m			不锈钢
B2	GB97.1-85	垫圈 12	A140	16			不锈钢
B1	GB32.1-88	螺栓 M12x45	A4-70	16			不锈钢
25	J392A1212	插头过渡箱	Ass'y	1	12	12	
24	DB-60b	挡板I Stop plate I	Q235	2	1.2	2.4	借用
23	J392A1211	轴套 bush	Q235	4	0.4	1.6	
22	J392A1210	销轴 shaft	42CrMo	2	8.5	17	
21	LOCK-00a	Automatic latch	Ass'y	2	3	6	借用
20	Men-LGa	门门	Ass'y	2	18	36	借用
19	FSDB-01GY	防水挡板	橡胶	4	0.15	0.6	借用
18	FSYB-01GY	压板	316	8	0.1	0.8	借用
17	ZMHL950-Cb	滑轮架	Ass'y	4	245	980	借用
16	HLZP-Ac	滑轮架	Ass'y	4	53.5	214	借用
15	J392A1209	扭簧	Ass'y	2	40	80	
14	J392A1208	超分子离合器	Ass'y	4	2	8	
13	J392A1207	超分子离合器	Ass'y	4	1.5	6	
12	HLDB950-H	滑轮架	Ass'y	2	8	16	借用
11	J392A1206	滑轮架	Ass'y	4	54	216	
10	HCZ-J392A12	滑轮架	Ass'y	1	2	2	借用
9	DC07-J392A12	储线框	Ass'y	1	254.6	254.6	
8	DHC-00	电缆附件	Ass'y	1	110	110	宁波
7	J392A1205	限位装置	Ass'y	1			
6	J392A1204	上梁标记	Mark	1			
5	DQ0100	接线箱	Ass'y	1	68	68	借用
4	J392A1203	护栏	Ass'y	1	176	176	
3		油缸	Hydraulic Cylinder	1	120	120	Designed By Hydraulic
2	J392A1202	移动架	Movable Frame	1	1737	1737	
1	J392A1201	主梁结构	Main Frame	1	2803	2803	
NO.	SUB-NO. or STDD	NAME & SIZE	MTL or STYLE	QTY/set	each WEIGHT	total WEIGHT	NOTE
PROJECT:GREECE PPA 65T QUAY CRANE							
ITEM NAME: 吊具上架		DRAW NO: J392A1200		PROJ.			
Headblock		TRACE		APP.			
ZPMC		DRAW		SET/CRANE			
		CHK		WEIGHT			
		VER.		1			
				779kg			